



30

YEARS



Derby East Scouts & Guides

Guiding High '98

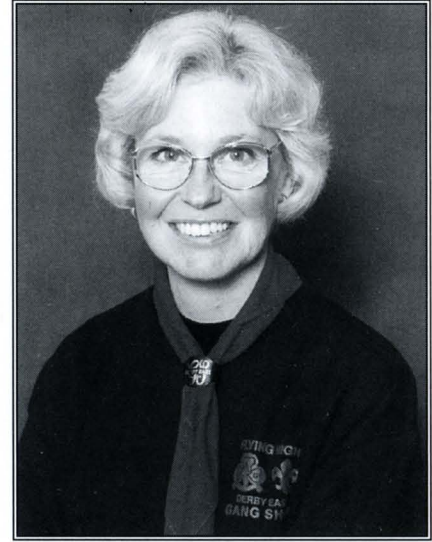
DERBY PLAYHOUSE



ANGELA ARTER
Choreographer



JOHN BARKER
Assistant Producer



JANE MILES
Costumer Director

Honorary Life Members:

NANCY BREARLEY
AUDREY BURGESS

JOHN R. HUGHES
MARY HUGHES



**Winner of the BBC Radio Derby
"Sound and Vision" Eagle Award
for Outstanding Achievement in 1996**

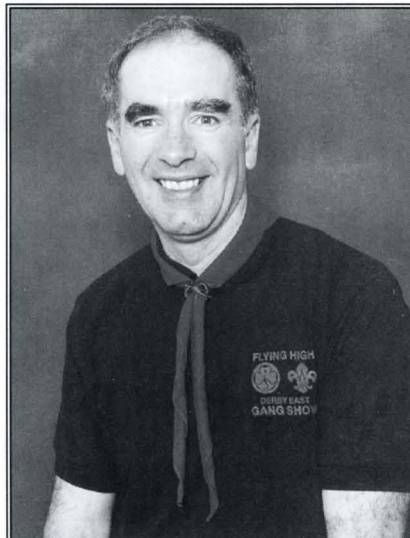


This production has been entered for *The Derby Amateur Theatre Awards* which will be presented at a special ceremony at Derby Playhouse in July this year

MARIE TOUGH
Musical Director



JOHN MILES
Stage Manager



JUDITH SPENCER
Assistant Choreographer





THE JUNIOR GANG



Reno's Hair Design

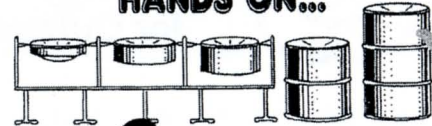
154 Nuns Street
West End, Derby 01332 347284

*Professional Hair Styling
for Ladies and Gents*

Tuesday	9 am - 7 pm
Wednesday	9 am - 6 pm
Thursday	9 am - 6 pm
Friday	9 am - 7 pm
Saturday	8 am - 5 pm

CAR PARKING ON FORECOURT

HANDS ON...



Pans

*Exciting Music Workshops
for all ages*

*A great opportunity to experience
authentic Caribbean and Indian
instruments at your own event.*

*Ideal for schools, Brownies, Cubs
Guides, Scouts, etc.*

RICHARD ARTER - 0115 9445 346

HANDS ON...



Indian Music

The Producer writes . . .

I am pleased to welcome you to our fifth production at Derby Playhouse and our thirtieth anniversary show. The first Derby East gang show, Flying High '68, was produced at Spondon Park Grammar School by John Hughes, and was one of the first shows to include girls. This is our sixteenth biennial show and we have included many old favourites from previous shows. The success of gang shows all over the world continues due to the comradeship existing between Scouts and Guides everywhere, and the fun and enthusiasm of taking part in the show was first generated by the late Ralph Reader, CBE, who produced the very first gang show in London in 1932. Derby East are proud to be presenting Flying High '98 here at Derby Playhouse once again.



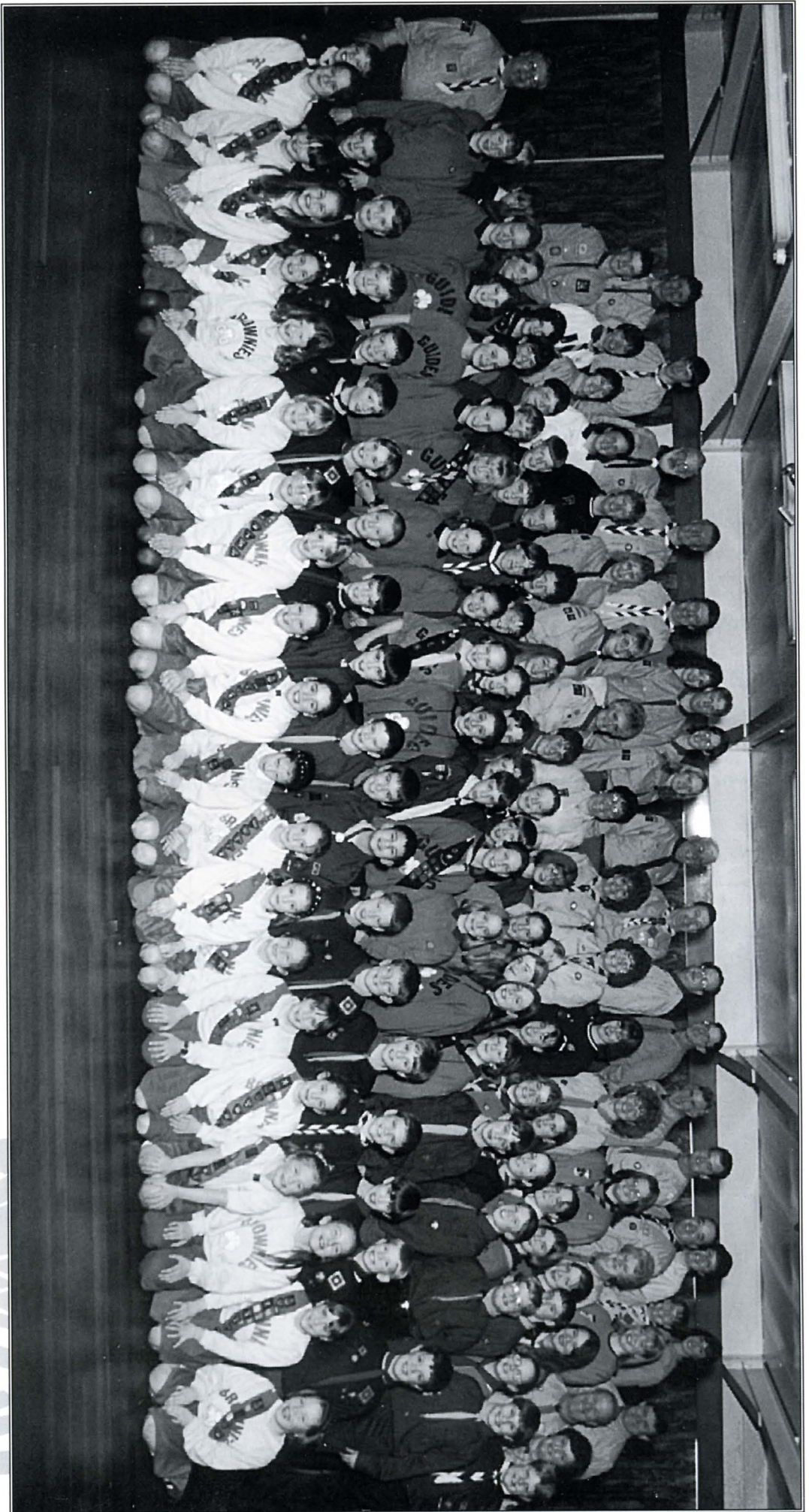
We are always grateful for the support received from our sponsors and I would like to thank all those who have donated money or services this year, it enables us to give that little bit extra!

The show would not be possible without the large number of leaders, parents and friends who have given up hours of their time voluntarily to help with the show and I would like to thank them, and the gang, for all their support over many months of rehearsal. I hope you will enjoy the show today as much as the gang have enjoyed presenting it for you.

JEAN ROULINSON



THE CUBS AND BROWNIES



THE GANG



The Gang

KIMBERLEY ALTON-BROWN
JANINE ARNOLD
ANGELA ARTER
EMMA BAGNALL
JOHN BARKER
RACHEL BARKER
LEANNE BARRY
JOANNE BARTON
SIMON BARTON
HELEN BEMBRIDGE
DAVID BENHAM
ELIZABETH BENNETT
ANDREW BENTLEY
CHRISTOPHER BERNANS
NICOLA BERNANS
RICHARD BERNANS
ADAM BIBBY
DANIEL BLACKSHIELDS
RHIANNON BOWEN
TREVOR BREARLEY
DARREN BROCKLEHURST
TONI BROCKLEHURST
JENNY BROOMFIELD
DAVE BROWN
SARA BROWN
JOSEPH BRYAN
AMANDA BURKE
VICTORIA CARR
CHRISTOPHER CHILTON
ROBERT CHILTON
THOMAS COUGHLAN
BRIAN COUNTER
CAROL COUNTER
KAY COUNTER
MARTIN COUNTER
AMY DAVID
BETHANY DICKSON
COLIN ELLIOTT
JACK ESPOSITO
STEPHEN FAIRCLOUGH
SAMANTHA FOGERTY
EMMA FOSTER
LINDA FOSTER
ROGER FOSTER
THOMAS FOSTER
GORDON FOX

RACHEL FOX
ROBERT FOX
LAURENCE FRY
MATTHEW FRY
DANIEL GAMMON
CAROLYN GAUNT
ADAM GOVAN
JANETTE GREENWOOD
STUART GROOMBRIDGE
SOPHIE HADFIELD
SALLY HALL
EMMA HAMMERSLEY
ELENA HAND
OLIVER HAND
REG HAND
CHARLOTTE HANSER
SHARON HANSER
EDWARD HAWKER
OLIVER HAWKER
PETER HOGG
NIGEL HOROBIN
JOHN HUGHES
DANIELLE HULLAND
LAURA JONES
STEPHEN JONES
SUSAN JUDSON
AMY JURRISON
BRIAN KELLY
CHRISTOPHER KELLY
MATTHEW KELLY
SHARON KELLY
DANIELLE LAMBKIN
MONICA LAMBKIN
NAOMI LAMBKIN
PAUL LAMBKIN
THOMAS LAMBKIN
REBECCA LAWRENCE
BEN LEE
HEIDI LEWIN
KATIE LOWE-GUEST
LAURA LUDLOW
NATALIE LYNAM
IAN MANN
JONATHAN MARRIOTT
SEAN MATHER
LEONNIE MEYERS
MATTHEW MEYERS
PAUL MIDDLETON
THOMAS MIDDLETON

DARREN MILL
KERRY MILL
RUTH MILL
CHRISTOPHER MOLD
KATIE OLDFIELD
JOE O'NEILL
LES PEARSON
TIMOTHY POUCHER
ALISON PRICE
RACHAEL PYE
MARION RAYBOULD
AMIE RAYNOR
GEMMA REEVE
CHRISTOPHER RILEY
EMMA ROBERTS
CORRI RODGERS
PETER ROE
BEV ROSS
JOANNE ROSS
JEAN ROULINSON
SAMANTHA ROULSTONE
CHARLOTTE ROWLES
BETHANY RYDER
THOMAS RYDER
RACHEL SAVILLE
KRYSTINA SHAH
LUCY SHARRATT
GILL SIMPSON
REBECCA SIMPSON
SARAH SIMPSON
GRAEME SLATER
ALEX SMITH
AMY SMITH
KATIE SMITH
JUDITH SPENCER
ROY STEVENSON
YVONNE STEVENSON
SARAH STIRLAND
JENNIFER SWAN
AVRYL TAYLOR
BEN TAYLOR
HELEN TAYLOR
PETER TAYLOR
REBECCA THOMASON
GORDON TOUGH
AMY WALSH
BEN WALTERS
LUCY WEEKS

Derby East Scouts & Guides Gang Show

ACT 1

1. RHYTHM

Sponsored by THE DERBY SCOUT SHOP

2. THE WANDERING HILLBILLIES

Sponsored by ROGER TUCKWOOD (1996) LTD., CASTLE DONINGTON

3. COUNTRY ROADS

Sponsored by THE SPONDON DRY CLEANING COMPANY

4. A NIGHT WITH THE STARS

Sponsored by NAT WEST BANK, SPONDON

5. STARSHINE AND MOONBEAMS

Sponsored by TELBROOK LTD., KEYWORTH

6. TIME FOR BED

Sponsored by TSB BANK

7. TOYLAND

Sponsored by M. MURFIN & SONS, COAL MERCHANT, CHADDESSEN

8. THE COLOURS OF MY LIFE

Sponsored by THE ROYAL MAIL

9. COLOURS

Sponsored by ADtranz

10. 30 YEARS AGO

Sponsored by STONEY CROSS GARAGE, SPONDON

11. FLYING HIGH MEMORIES

Sponsored by CHERRY TREE HILL POST OFFICE, CHADDESSEN



ACT 2

12. SWAN LAKE

Sponsored by ARISTOC

13. ZIP A DEE DOO DAH

Sponsored by SANDIACRE TV SERVICES

14. BE OUR GUEST

Sponsored by RUSHCLIFFE TEXTILES LTD.

15. THE SPECIALIST

Sponsored by BALFOUR BEATTY RAIL MAINTENANCE LTD.

16. DEEP SOUTH

Sponsored by MSF UNION, ROLLS-ROYCE & ASSOCIATES

17. IT'S ALL A LOAD OF BOWLS!

Sponsored by INDUSTRIAL SELF ADHESIVES LTD, NOTTINGHAM

18. PIRATES BOLD

Sponsored by ROLLS-ROYCE plc

19. REPRESENTING THE GUIDES

Sponsored by ASHFIELD SCREEN PRINTING LTD., BORROWASH

20. ALL WE WANT TO DO

Sponsored by REES & PLANT LTD., PLUMBING AND HEATING CONTRACTORS

21. WE'VE BEEN MAKING MEMORIES

Sponsored by EDWARDS GELDARD, SOLICITORS



Flying High '98 Production Team

<i>Directed and Produced by</i>	JEAN ROULINSON
<i>Assistant Producer</i>	JOHN BARKER
<i>Musical Director</i>	MARIE TOUGH, LTCL, LTCL (CMT)
<i>Choreographer</i>	ANGELA ARTER, MAAD (TSV)
<i>Assistant Choreographer</i>	JUDITH SPENCER
<i>Wardrobe Director</i>	JANE MILES
<i>Senior Wardrobe Assistant</i>	NANCY BREARLEY
<i>Stage Manager</i>	JOHN MILES, PHIL LOWE (Derby Playhouse)
<i>Assistant Stage Manager</i>	STUART WILKINSON
<i>Graphic Design</i>	PAULA RAYBOULD
<i>On The Book</i>	MOBY RENSHAW (Derby Playhouse)
<i>Stage Crew</i>	IAN ALGIE (Derby Playhouse), STEPHEN BAINES, DEREK BALE JANET BALE, PETE DIXON, DAVID FAIRCLOUGH STEVE FOGERTY, LES GASKIN, JOHN HOWARTH, DAVE MACALISTER, JOHN PYE, PAULA RAYBOULD GORDON ROULINSON, DAVE WOOD, SUZANNE WOOD
<i>Lighting Director</i>	MARTIN COLLINS
<i>Lighting Designer</i>	ALEXANDRA STAFFORD (Derby Playhouse)
<i>Follow Spot Operators</i>	MARTIN KENT, JONTY ROE
<i>Lighting Crew</i>	MARK COLLINS, ROBIN MOLD
<i>Sound Operator</i>	EMMA SAINSBURY (Derby Playhouse)
<i>Prompter</i>	MARION FOX
<i>Production Assistants</i>	LINDA FOSTER, RUTH MILL
<i>Wardrobe Team</i>	AUDREY BURGESS, OLIVE BUTCHER, MARION FOX MARGARET GILLER, ALISON HIGLEY, JOAN JOHNSON DEBBIE LYNAM, BARBARA MULVANEY BARBARA NETHERWOOD, MARGARET PARKER BETTY SPENCER, LYNNE WAYNE
<i>Make up Director</i>	SUSAN MARTIN
<i>Make up Team</i>	SHARON BABB, PAULINE COLLINS, LIZ CARR, LYNDA GILMOUR CAROL HAND, LORRAINE MANN, KAREN MELLOR, VAL PYE CAROLE RILEY, LYNNE SHARRATT, LISA WARD
<i>Dressers</i>	DORIS BLURTON, NANCY BREARLEY, AUDREY BURGESS JANET BROCKLEHURST, WENDY ESPOSITO, MARGARET GILLER GILL HOWARTH, PAT HULLAND, JOAN JOHNSON BARBARA NETHERWOOD, MARGARET PARKER, CYRIL ROSS LYNN WILKINSON
<i>Property Manager</i>	PETE DIXON
<i>Property Assistants</i>	JEANNETTE KENT, MARK SHARRATT
<i>Property Makers</i>	PETE DIXON, ALBERT MATHER
<i>Scenery Builders</i>	STEVE FOGERTY, LES GASKIN, DAVE MACALISTER JOHN MILES, JOHN PYE, PAULA RAYBOULD GORDON ROULINSON, STUART WILKINSON, DAVE WOOD
<i>Business & House Manager</i>	PAT HEAP
<i>Assistant House Manager</i>	GORDON HILTON
<i>Front of House Assistants</i>	JOHN HUGHES, MARY HUGHES
<i>Publicity Manager</i>	COLIN ELLIOTT
<i>Booking Manager</i>	LINDA FOSTER
<i>Treasurer</i>	GORDON FOX
<i>Registrars</i>	WENDY ESPOSITO, PAT HULLAND
<i>Catering Manager</i>	KATH COKAYNE
<i>Catering Assistants</i>	PETE DIXON, JENNY HOROBIN JEAN HOWARTH, JACKIE KELLY

Musical Accompaniment

Conducted and Directed by: MARIE TOUGH, Keyboard

MICK ATKINS, Drums • IAN DAINTY, Guitar • SIMON HILL, Piano
NEIL MARRIOTT, Keyboard • MARIANNE SMITH, Saxophone

Musical Assistants: MARION FOX, LISA RICHARDSON

Songs from the Show . . .

by JIM FOOTE *Fellow with the Lucky Star*
by PETER McELHINNEY *Sons of the Sons of the Pirates*
by the late RALPH READER, CBE *All The Colours Of The Rainbow*
All We want To Do, Fiesta Time, Flying High
I See Red, Meet the Navy, The Pirate Song
We'll Go On And On
We've Been Making Memories
by MARIE TOUGH & JOHN R. HUGHES *Don't Stand Too Near Charlie, Ma*

Sketches from the Show . . .

by JOHN R. HUGHES *Representing the Guides, Thirty Years Ago*
by JOHN MILES *A Night with the Stars*
It's All A Load Of Bowls
The Specialist, Time for Bed



PIRATES BOLD



THE PRODUCTION TEAM

Taking Part

The following sections of the Scout and Guide Associations are represented, both in the cast and backstage in this show

- | | |
|---|--|
| 27th Derby (Chaddesden) Gold Cub Scouts | 1st Ripley Scouts |
| 27th Derby (Chaddesden) Green Cub Scouts | 3rd Sandiacre Livingstone Cub Scouts |
| 27th Derby (Chaddesden) Scouts | 3rd Sandiacre Scouts |
| 27th Derby (Chaddesden) Phoenix Venture Scouts | Derby East District Scout Council |
| 35th Derby (Markeaton) Cub Scouts | Derby East District Scout Fellowship |
| 63rd Derby (Darley Abbey) Cub Scouts | Derbyshire County Scout Council |
| 66th Derby (1st Spondon) Mars Cub Scouts | Long Eaton District Scout Council |
| 66th Derby (1st Spondon) Thor Cub Scouts | 10th Derby (St. Marks) Brownie Guides |
| 66th Derby (1st Spondon) Woden Cub Scouts | 36th Derby (Alvaston) Guides |
| 66th Derby (1st Spondon) Wolf Scouts | 39th Derby (Sinfin) Brownie Guides |
| 66th Derby (1st Spondon) Greyhound Scouts | 1st Draycott Brownie Guides |
| 66th Derby (1st Spondon) Spartan Venture Scouts | 1st Draycott Guides |
| 86th Derby (Little Eaton) Scouts | Long Eaton North District Brownie Guides |
| 125th Derby (Littleover) Scouts | Mackworth Methodist Guides |
| 132nd Derby (2nd Chaddesden) Scouts | 1st Oakwood Brownie Guides |
| 132nd Derby (2nd Chaddesden) Arrow Venture Scouts | 1st Oakwood Guides |
| 145th Derby (Hill Top) Cub Scouts | 2nd Oakwood Brownie Guides |
| 145th Derby (Hill Top) Scouts | 2nd Ockbrook Guides |
| 147th Derby (3rd Ockbrook & Borrowwash) Dove Cub Scouts | 4th Ripley Brownie Guides |
| 147th Derby (3rd Ockbrook & Borrowwash) Scouts | 1st Sandiacre Guides |
| 147th Derby (3rd Ockbrook & Borrowwash) Pennine
Venture Scouts | 2nd Spondon Rainbow Guides |
| 150th Derby Cub Scouts | 2nd Spondon Brownie Guides |
| 151st Derby (St. Nicholas) Scouts | 2nd Spondon Guides |
| 158th Derby (Breadsall Village) Cub Scouts | 3rd Spondon Guides |
| 171st Derby (1st Oakwood) Cub Scouts | 4th Spondon Brownie Guides |
| 171st Derby (1st Oakwood) Scouts | 1st West Hallam Guides |

Acknowledgements

Thanks to the following who very generously donated or subsidised the cost of materials and services or gave invaluable assistance. Please support these companies or organisations who supported us:

27th Derby (Chaddesden) Scout Group for use of premises for scenery building and storage
66th Derby (1st Spondon) Scout Group for use of premises for rehearsals
Spondon Community Association for use of The Village Hall for rehearsals
Derby Scout and Guide Centre for display and storage facilities
Good Companions Stage Society for loan of stage equipment and costumes
Industrial Self Adhesives Ltd for materials and transport
Ashfield Screen Printing Ltd for printing and materials
A.B.Camp Contractors Ltd for transport
Isolated Systems Ltd for transport
Aristoc Hosiery Ltd for tights
Speedy Hire Centres Ltd for loan of tools
B & Q Ltd for paint
Wickes Ltd for timber and materials
BOC Ltd for dry ice
Derby Timber Supplies Ltd for timber
Stage Sets Ltd for assistance with backcloths
Stage Services Ltd for flame retarding material
Boddylines for costumes
Harris & Parkin Ltd for fabric
Rushcliffe Textiles Ltd (Centre Spot) for fabric
Nevilles Textiles Ltd for assistance with fabric
Field Sports for footwear
City of Derby Sea Cadet Corps for loan of hats
Ladies of Spondon Asterdale WI for assistance with costumes
The Spondon Dry Cleaning Company for pressing
Pressed for Time ironing service
Richard Seal for photography

A special thank you to all the management and staff of Derby Playhouse for their never ending support and help.

We have many hundreds of costumes from this or previous shows which are available for sale or hire. They are also available on loan to other Gang Shows. Please contact Jane Miles on Derby 704671.



THE SENIOR GANG

WOULD YOU LIKE TO JOIN US?

Leaders, helpers and administrators are always required by all sections of the Derby East Scout and Guide Associations.

No experience is necessary as full training can be given.

If you are interested in helping in any way, then please contact the following:

FOR SCOUTS —

DERBY EAST DISTRICT COMMISSIONER:

MRS. MARGARET GILLER

27 The Chase, Little Eaton, Derby DE21 5AS

Tel: (01332) 883361

FOR GUIDES —

DERBY EAST DIVISION COMMISSIONER:

MRS. SANDRA WALLIS

47 Oxford Street, Spondon, Derby DE21 7JN

Tel: (01332) 673750

Derby Arts and Theatre Diary

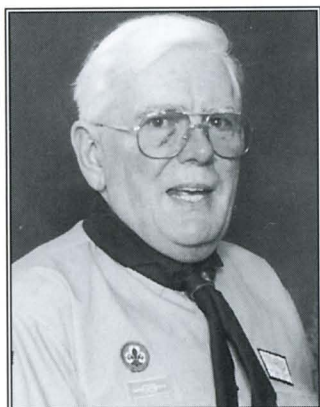
- March 6th **Painting Demonstration by Alan Oliver**
Derby Sketching Club (01332 769569)
Grange Hall Community Centre, Littleover
- March 7th **Delibes, Rachmaninov and Pärt Concert**
Derby Concert Orchestra (01629 822607)
St. Peter's Church, Littleover
- March 10th-14th **Guys and Dolls**
Central Operatic Society (01332 664577)
Landau Forte College
- March 16th-21st **Musical Merits (A Musical Revue)**
Good Companions Stage Society
Guildhall, Derby (01332 767803)
- March 20th **Lecture by Max Craven: Derby's Statues and Monuments**
Derby Sketching Club (01332 769569)
Grange Hall Community Centre, Littleover
- March 21st **Chameleon Chamber Ensemble**
Music at Duffield (01332 841503)
Ecclesbourne School, Duffield
- March 25th-28th **Rigoletto**
New Opera Company (01332 363275)
Derby Playhouse



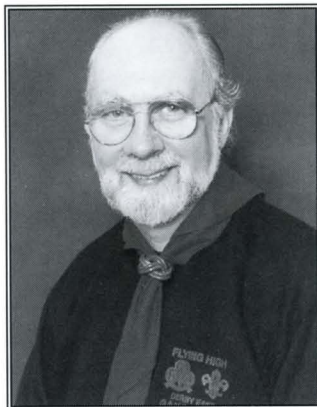
SUSAN MARTIN
Make-up Director



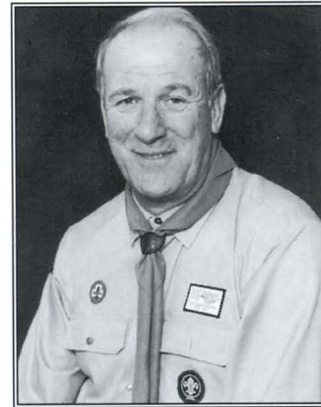
LINDA FOSTER
Booking Manager



GORDON FOX
Treasurer



MARTIN COLLINS
Lighting Director



COLIN ELLIOTT
Publicity Manager